

Softxexpand

Evaluation Version 2.0.122

User Manual

The manual is subject to change without notice. Please refer to MiniFrames' web site at:
www.miniframe.com and download the latest updates and documentation.

Table of Contents

1. Introduction to SoftXpand	4
2. Hardware requirements	5
2.1 Video card options	5
2.2 Hardware guidelines	6
3. Installing the hardware	9
3.1 Installing a video card	9
3.2 Connecting the other components	15
4. Installing SoftXpand	16
4.1 Activating the software (release version only)	16
4.2 Adjusting and saving the display settings	19
5. Start using SoftXpand	22
5.1 Assigning a keyboard and mouse to a monitor	24
5.2 Logging on to SoftXpand	25
5.3 Assigning a keyboard and mouse while working	25
5.4 Assigning a sound device to a workstation	25
5.5 Changing display settings while working	26
5.6 Exiting to Windows	29
5.7 Using the Console Viewer for remote control	29
6. SoftXpand Admin Tools	36
6.1 Accessing the Admin Tools	36
6.2 The three Admin Tools tabs	37
6.3 Using the Admin Tools	40
7. Using the Device Mapper to configure a USB storage device	47

Table of Figures

Figure 1: A five-workstation <i>SoftXpand</i> setup.....	4
Figure 2: The PCI, PCI-Express, and AGP slots	10
Figure 3: Typical dual video card.....	11
Figure 4: Mounting the video card into the slot.....	12
Figure 5: Attaching the metal bracket to the computer case	12
Figure 6: Display Properties dialog box	14
Figure 7: Activating <i>SoftXpand</i>	16
Figure 8: Activation dialog box.....	17
Figure 9: "Invalid Display Settings" error message.....	19
Figure 10: Display Properties dialog box	20
Figure 11: Saving the configuration	21
Figure 12: Starting <i>SoftXpand</i>	22
Figure 13: Logon dialog box	23
Figure 14: Monitor settings	26
Figure 15: Monitor Settings dialog box	27
Figure 16: Monitor Settings dialog box	28
Figure 17: Starting the Console Viewer	30
Figure 18: <i>SoftXpand</i> Console Viewer.....	31
Figure 19: Starting the Admin Tools	36
Figure 20: Terminal Session Manager tab.....	37
Figure 21: Display View tab.....	38
Figure 22: <i>SoftXpand</i> Settings tab.....	39
Figure 23: Application Start Settings area	40
Figure 24: Session Start area	41
Figure 25: Add New User dialog box.....	42
Figure 26: Video Modes dialog box	45
Figure 27: Starting the Device Mapper	47

1 Introduction to SoftXpand

SoftXpand software enables multiple users to simultaneously and independently share a personal computer running the Microsoft® Windows® XP Professional Service Pack 2 operating system.

For each additional workstation/user, you merely install an additional video card; a set that includes a monitor, USB keyboard, and USB mouse; and the SoftXpand software, for a maximum of eight fully independent computer workstations.

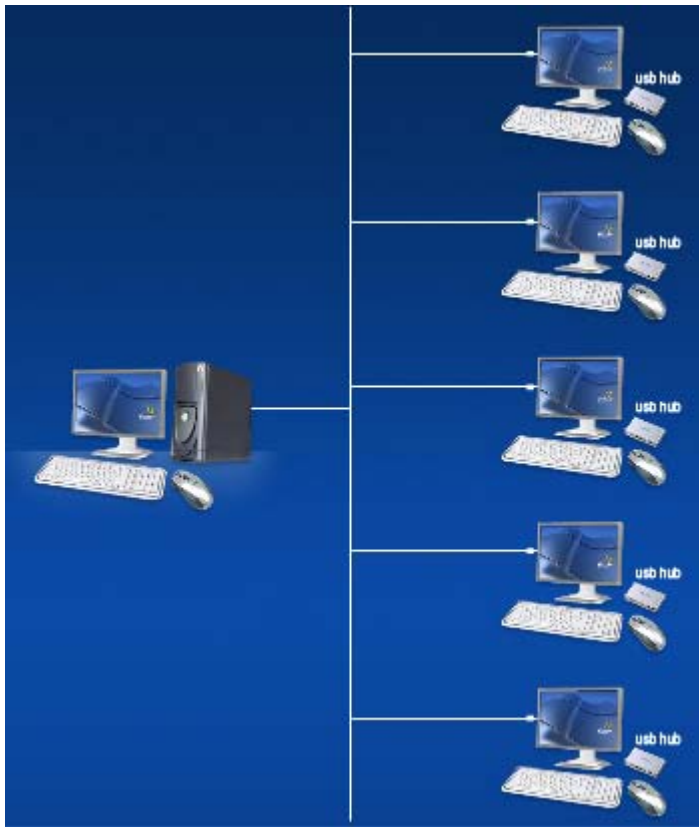


Figure 1: A five-workstation SoftXpand setup



2 Hardware requirements

SoftXpand requires an available PCI, PCI Express, or AGP slot to install the video card.

At least one USB connector must be available for the keyboards and mice.

Optionally, any dual video adapter can be used (PCI, PCI Express, or AGP) with two video outputs.

Minimum hardware requirements

1. **CPU** – Intel® Pentium® 4 1300 MHz or equivalent AMD processor
2. **Memory** – 256 MB of physical memory
3. **PCI slot** – at least one available
4. **Power supply** – at least 300 W
5. **USB port** – at least one available
6. **Display card(s)** – at least one dual display card that supports Windows XP Multiple Monitors, or two single display cards

Note: All NVIDIA dual display cards work perfectly with SoftXpand. Our native load balancing display driver achieves maximum performance with NVIDIA cards.

2.1 Video card options

SoftXpand uses a standard or dual PCI, PCI Express, or AGP video card to accommodate additional workstations/users. We recommend using dual-head video cards. This enables you to add one video card for each two additional workstations.

There are motherboards on the market with dual-view integrated video cards.

For example: An NForce2 with a GeForce4 video adapter or another similar adapter would enable two SoftXpand workstations to be connected without any extra video cards.



In order to be used by SoftXpand, the video card must support the Windows XP Multiple Monitors feature. If you are not sure, ask the vendor of the video card.

TV output: If you have installed a video card that supports TV output, then you can use a television set instead of a monitor.

2.2 Hardware guidelines

Note: This table is occasionally updated; please refer to our Web site for an updated version at: www.mimiframe.com

Tested Hardware Supported by SoftXpand

No of workstations/Component	2-4 workstations	5-6 workstations	More than 6 workstations
CPU	Any AMD Athlon™ 64 processor	Any AMD Athlon™ 64 processor	Contact Us at Info@mimiframe.com
	Any AMD Athlon™ 64 FX processor	Any AMD Athlon™ 64 FX processor	
	Any AMD Athlon™ 64 X2 Dual-Core processor	Any AMD Athlon™ 64 X2 Dual-Core processor	
	Any AMD Sempron™ processor	Any AMD Sempron™ processor	
	Any Intel® Core™2 Extreme processor	Any Intel® Core™2 Extreme processor	
	Any Intel® Core™2 Quad processor	Any Intel® Core™2 Quad processor	
	Any Intel® Core™2 Duo processor	Any Intel® Core™2 Duo processor	
	Any Intel® Pentium® D processor	Any Intel® Pentium® D processor	
	Any Intel® Celeron® D processor	Any Intel® Celeron® D processor	
	Any Intel® Pentium® 4 processor	Any Intel® Pentium® 4 processor	

No of workstations/Component	2-4 workstations	5-6 workstations	More than 6 workstations
Motherboard	GIGABYTE GA-965P-DQ6	GIGABYTE GA-965P-DQ6	
	GIGABYTE GA-K8NXP-SLI nForce 4 SLI	GIGABYTE GA-K8NXP-SLI nForce 4 SLI	
	GIGABYTE GA-8I945GMF-RH	GIGABYTE GA-8I945GMF-RH	
	GIGABYTE GA-8I945PL-G	GIGABYTE GA-8I945PL-G	
	ASRock ALiveNF4G-DVI	ASRock ALiveNF4G-DVI	
	Intel® 915G chipset,	Intel® 915G chipset,	
	Intel 865G chipset,	Intel 865G chipset,	
	M2NPV-VM 6150 AM2 AM	M2NPV-VM 6150 AM2 AM	
Memory	Every workstation requires at least 256 MB.	Every workstation requires at least 256 MB.	Contact Us at Info@miniframe.com
Video card	GeForce 5500 FX	GeForce 5500 FX	
	GeForce 6200	GeForce 6200	
	GeForce 6600 GT	GeForce 6600 GT	
	GeForce 7300 GS	GeForce 7300 GS	
	GeForce 7300 GT	GeForce 7300 GT	
	GeForce 7300 LT	GeForce 7300 LT	
	GeForce 7900 GT/GTO	GeForce 7900 GT/GTO	
Keyboard	Any PS2 or USB keyboard	Any PS2 or USB keyboard	
Mouse	Any PS2 or USB mouse	Any PS2 or USB mouse	
USB hub	Any USB hub with power supply that applies USB 1.1 specification or USB 2.0 specification that is listed on usb.org.	Any USB hub with power supply that applies USB 1.1 specification or USB 2.0 specification that is listed on usb.org.	



Workstation hardware

Each *SoftXpand* workstation/user requires the following:

1. PCI, PCI Express, or AGP video card
these must support the Windows XP Multiple Monitors feature. Most recent video cards do support this function, but if you have any concerns, contact your video card vendor.
2. Monitor
3. USB keyboard
4. USB mouse
(A PS2 keyboard and mouse can be assigned to the first workstation.)
5. If you need sound, you can use USB sound cards, or alternatively, add additional PCI audio cards.



3 Installing the hardware

The installation process is presented in this chapter. With the simple steps below, it should take only 20 minutes to set up a two- or three-workstation system.

Note: Install the additional video card(s), monitor(s), USB mouse or mice, and USB keyboard(s) to the host PC before installing the SoftXpand software. The drivers for the additional hardware are not included with SoftXpand software and must be installed separately. It is important to test the hardware in Windows before installing SoftXpand software.

Terminology

Host: The PC with a Windows XP Professional SP2 operating system on which SoftXpand software is installed.

Workstation: A location for additional users to work that includes a set of: monitor, USB/PS2 keyboard, and USB/PS2 mouse connected physically to the host and assigned to the workstation by SoftXpand software.

3.1 Installing a video card

3.1.1 Introduction

Three types of slots, and thus three types of video cards, are available (see Figure 2):

1. **PCI** (Peripheral Component Interconnect): A slot designed to accommodate a wide range of computer components, including video cards, sound cards, and modems. Your computer will contain up to six PCI slots.
2. **PCI Express:** Built for very powerful video adapters. There may be more than one PCI Express slot on the motherboard.
3. **AGP** (Accelerated Graphics Port): The AGP slot is dedicated solely to video cards. AGP video cards are more powerful than PCI video cards. There will be one AGP slot on the motherboard.

Figure 2 shows the location of these slots on a typical motherboard.

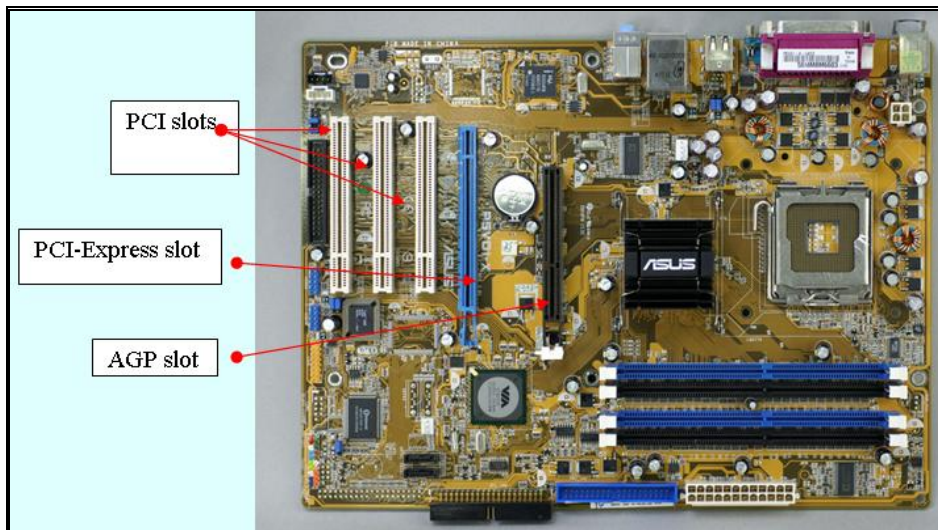


Figure 2: The PCI, PCI-Express, and AGP slots

Before you start installing a video card, make sure you have the following items:

1. A Phillips-head screwdriver of appropriate size
2. The manual that came with your new video card
3. A place to work that is not carpeted. Carpet is prone to building up static electricity
4. The instruction sheet that came with the computer case

The following figure shows the parts of a video card:

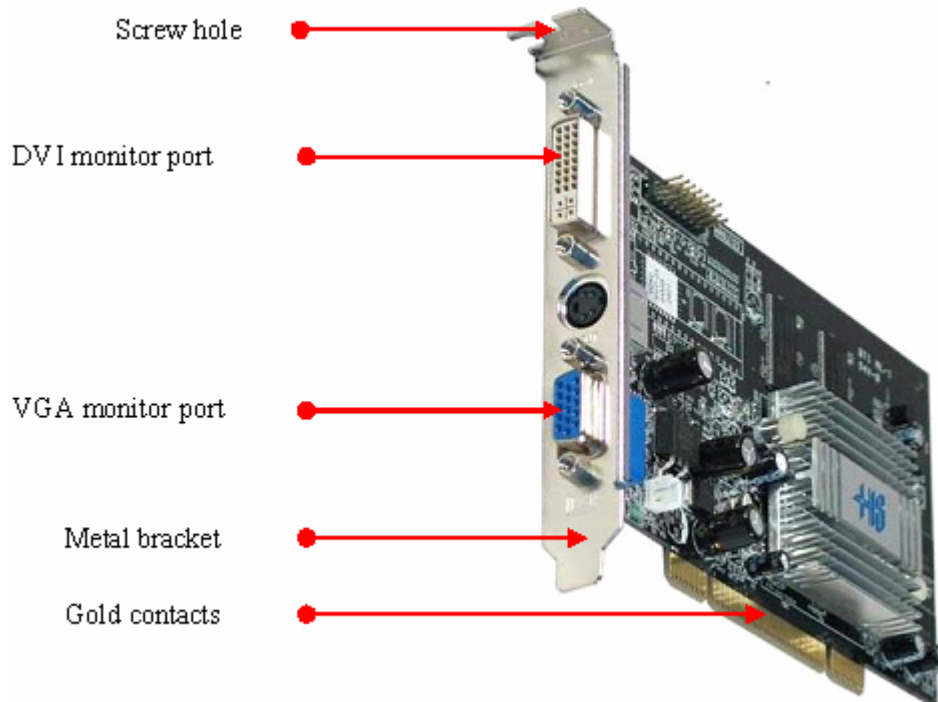


Figure 3: Typical dual video card

1. **Screw hole:** The small hole where a screw attaches the video card to the computer case.
2. **Monitor port:** Where the monitor cable plugs in.
3. **Metal bracket:** The metal piece attached to a video card that contains the monitor port and screw hole.
4. **Gold contacts:** The part of the video card that actually connects to the motherboard and gets inserted into the slot.

Warning: Do not touch the gold contacts of the video card; you could damage it severely.

3.1.2 Inserting the video card

To insert the video card into the computer:

1. Orient the gold contacts of the new video card towards the appropriate slot on the motherboard.
2. If necessary, flip the card so that its metal bracket faces towards the back of the computer case. In this position, the top of the card will be facing down (towards the bottom of the case). The gap in the gold contacts on the card will line up with the separation in the slot.

Warning: It only takes a small, invisible fracture to permanently damage the video card. When inserting the card into the slot, be careful not to push too hard at the wrong angle, or you could break it. Treat it gently and do not bend or twist it.

3. Gently, but firmly, insert the card into the slot. A solid push straight down is usually enough to set the video card in place. When the video card is correctly placed, the screw hole in its bracket will be flush against the screw hole in the case, as shown in the figure below:



Figure 4: Mounting the video card into the slot

4. Fasten the card using the screw that came with your video card or the one used to secure the old video card.

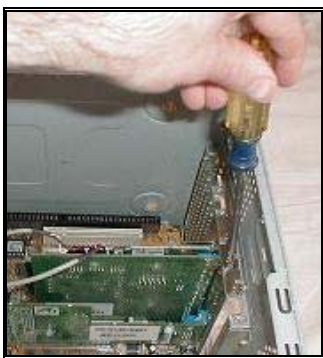


Figure 5: Attaching the metal bracket to the computer case

<http://www.miniframe.com>

5. If the new video card has any wires attached to it, connect them to the power supply. Your video card manual will have more detailed instructions on this process.
6. Plug all cables back in to the computer. Be certain that the monitor cable is plugged into the new video card and secured properly.
7. Turn on the monitor.
8. Turn on the computer. If you see an image on the screen, then your new video card is properly installed.
9. If you don't see an image on the screen, go into the host PC's BIOS/CMOS Setup and select the option to boot up from AGP first. Follow the BIOS/CMOS manufacturer instructions.

Note: If you still do not see anything on the monitor, recheck your connections. Make sure that the monitor is on and the cable is plugged in securely. Double-check that your new video card is firmly and properly secured. Refer to your video card's manual for any further troubleshooting.

10. Install the video card drivers:

Note: Make sure you are logged in as an Administrator. Otherwise you will be unable to complete these steps.

Now that the video card is up and running, it's time to let Windows know which card you installed. Windows requires appropriate drivers to tell it exactly how to utilize the new video card.

Each video card manufacturer has a different method of installing the video card drivers in Windows. Accordingly, check your video card manual for specific instructions on how to install the drivers. The actual driver files are usually included with the video card in the form of a driver CD. Drivers can also be downloaded directly from the manufacturer of the video card or video card chipset.

Note: SoftXpand software requires the most recent drivers; without it the software may not work properly.

3.1.3 Setting Multiple Monitors configurations on Windows XP

To check and set the Multiple Monitors configurations:

1. Follow the path: **Control Panel > Display > Display Properties > Settings**
2. Click one of the monitors in the **Drag the monitor icons to match the physical arrangement of your monitors** section.
3. In the **Display** field, you will see the names of your installed video cards:

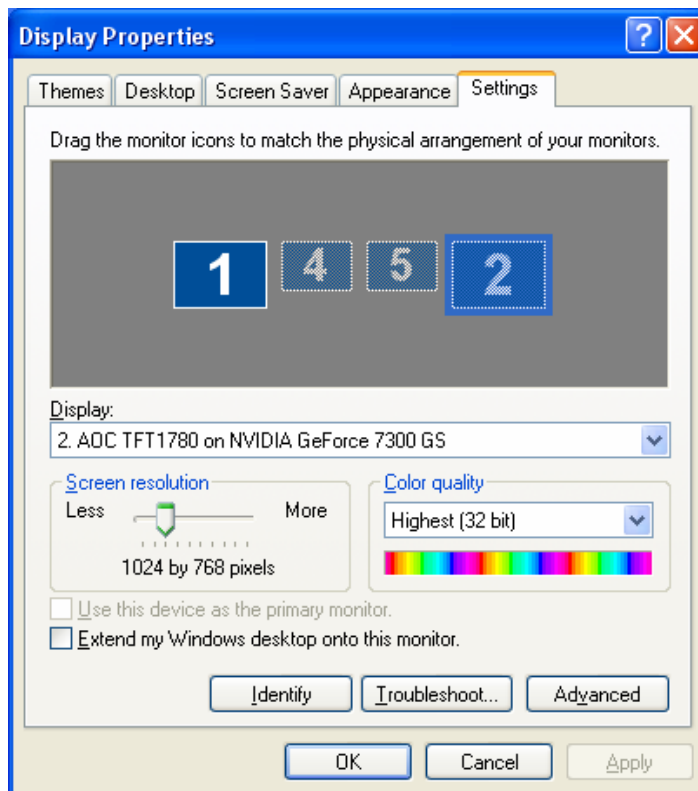


Figure 6: Display Properties dialog box

4. To enable the Multiple Monitors feature of the video cards, choose one of the gray monitors (disabled or not connected) and then select the Extend my Windows desktop onto this monitor check box.
5. The monitor connected to the additional video card should now display the same background color and pattern as the primary monitor. Drag your mouse all the way to the next monitor. The mouse cursor should now appear on the other monitor.

6. Repeat the above steps on all the monitors that are connected to the host. Click the **Identify** button and make sure each monitor shows its number and that all monitors show different numbers.

This means that the Multiple Monitors feature is working correctly. If you cannot see this, we suggest that you contact the video card manufacturer for assistance and refer to the Microsoft Multiple monitors knowledge base. The following link to the Microsoft.com resources documentation website is a good start point: [Multiple Monitors overview](#)

3.2 Connecting the other components

To connect the monitor(s), USB mouse or mice, and USB keyboard(s):

1. Follow the manufacturer's instructions.
2. Connect all the mice, keyboards, and monitors and check to make sure all work properly.
3. Check each mouse separately by moving it to see if the cursor moves properly.
4. Check the keyboard by pressing keys and seeing if they react.

Warning: Do not continue if any of the devices do not work properly. Consult with your vendor.

4 Installing SoftXpand

Note: Make sure you are logged in as an Administrator. Otherwise you will be unable to complete the next steps.

To install *SoftXpand*:

1. Download *SoftXpand* software, extract the file *SoftXpand.zip* and run *setup.exe*.
2. Follow the instructions during the installation process.
3. After installation is complete and the computer is restarted, you will need to activate the software. Please follow the procedure below.

4.1 Activating the software (release version only)

Note: Have the serial number on hand and know the number of workstations you are going to install.

To activate *SoftXpand*:

1. In the **Start** menu, point to **All Programs > SoftXpand** and then choose **Activation**:

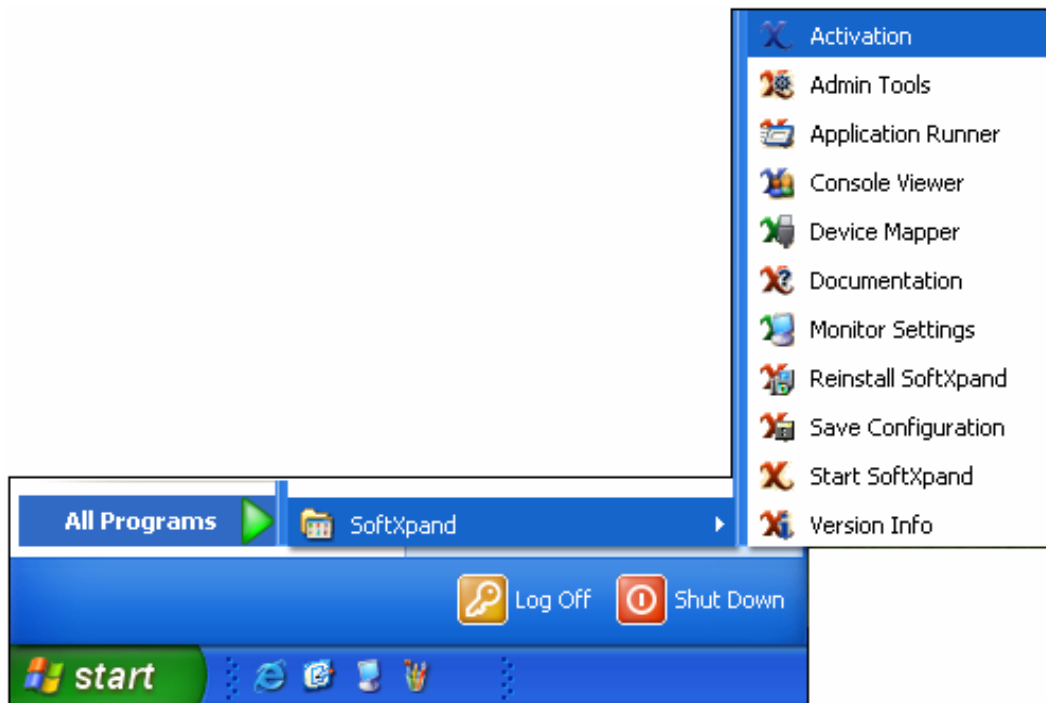


Figure 7: Activating *SoftXpand*

2. Fill in all the details as shown in the example below:

Activation

User Identification

User:

e-Mail:

User Location:

Country:

City:

Company:

Serial Number: Stations Number:

Activation:

Activate Now:

Server: TCP HTTP

Use Proxy Server

Proxy Server: (Default: IE settings)

Port: (Default: 80)

Activate Later

Local Path: File Name:

Activate Close Cancel

Figure 8: Activation dialog box

3. You may activate the software now or later.



4.1.1 Activating the software online

Note: This is possible only if the *SoftXpand* host computer is connected to the Internet.

To activate *SoftXpand* online:

1. In the **Activation** section, select the **Activate Now** option.
2. Type the required information in the **User Id**, **User Location**, **Serial Number**, and **Stations Number** sections.
3. Click the **Activate** button. A confirmation dialog box appears after a few seconds.
4. Click **OK**.

4.1.2 Activating later

If you choose this option, the application will create a file that you should save to a location of your choice. Attach the file into an email addressed to MiniFrame at support@miniframe.com. An activation file will be sent back to you.

To Activate *SoftXpand* later:

1. In the **Activation** section, select the **Activate Later** option.
2. Click the **Activate** button.
3. Attach the file to an email and send it to us at: support@miniframe.com.
4. We will respond promptly and email another file back to you, which is your activation file.
5. When you save the file to your computer, change its extension to dll. The new name should be: `ActivateData.dll`.
6. Copy the file to the root directory of your Windows.
Example: `C:\Windows\ActivateData.dll`
7. *SoftXpand* is now registered and activated.



4.2 Adjusting and saving the display settings

Save the display configuration every time you connect or disconnect a monitor from a computer, change a video card, or want to change one of the workstations' display configuration.

The display settings that you can save are: resolution, color quality, screen refresh rate, and primary monitor settings. (Please refer to section 3.1.3, "Setting Multiple Monitors configurations on Windows XP.")

To adjust and save the display settings:

1. Follow the path: **Control Panel > Display > Display Properties > Settings**
2. A message will pop up saying "Invalid Display Settings." This message is normal; it is the result of *SoftXpand* 's virtual video driver.

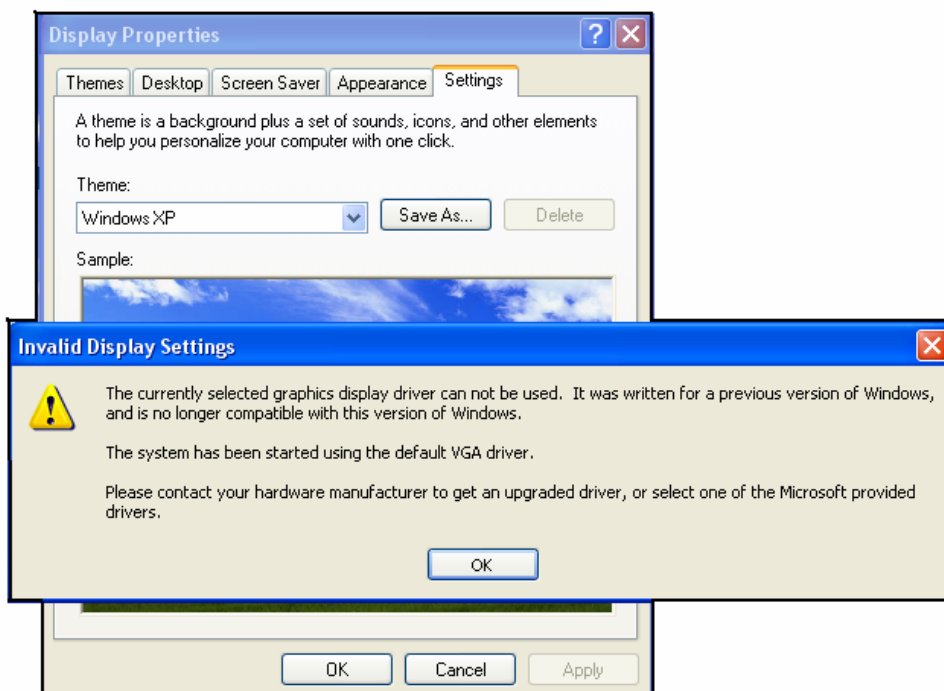


Figure 9: "Invalid Display Settings" error message

1. Click **OK** and the **Display Properties** dialog box appears:

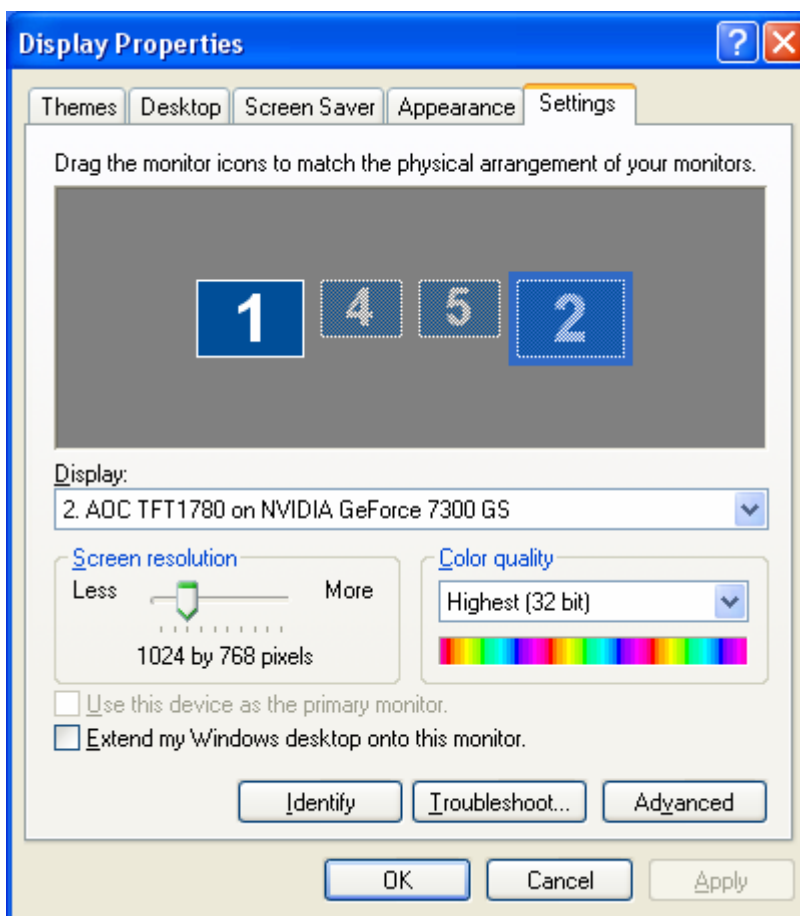


Figure 10: Display Properties dialog box

2. Choose the monitor you want to turn on or the monitor whose display settings you want to change.

Note: If you do not know which number to choose, you can either turn on all the monitors and then click the **Identify** button, or consult the **Display** field to see which monitor connects to which video card.

3. Before making any display changes, turn on the selected monitor by marking the **Extend my Windows desktop onto this monitor** check box and then clicking **Apply** or **OK**.
4. Make any desired changes to the display settings.
5. To use the monitor as the primary monitor:
 - a. Turn on the monitor you want to designate as primary

- b. Select the **Use this device as the primary monitor** check box.
 - c. Click **Apply** or **OK**. This will turn off all the monitors and move the **Desktop** to the monitor you chose as primary.
6. In the **Start** menu, point to **All Programs > SoftXpand** and then choose **Save Configuration**. You will receive the following message: "SoftXpand saved configuration successfully."

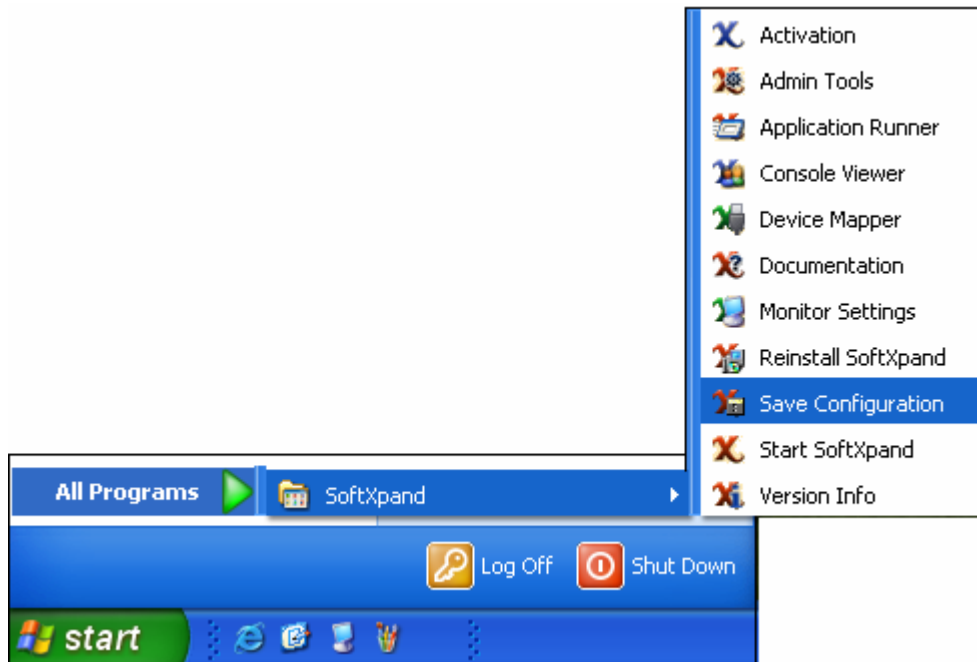


Figure 11: Saving the configuration

5 Start using SoftXpand

There are two ways to start the SoftXpand system: manually or automatically.

To start SoftXpand manually:

1. Log on to Windows.
2. Double-click the **SoftXpand** icon on the **Desktop**; or in the **Start** menu, point to **All Programs > SoftXpand** and then choose **Start SoftXpand**:

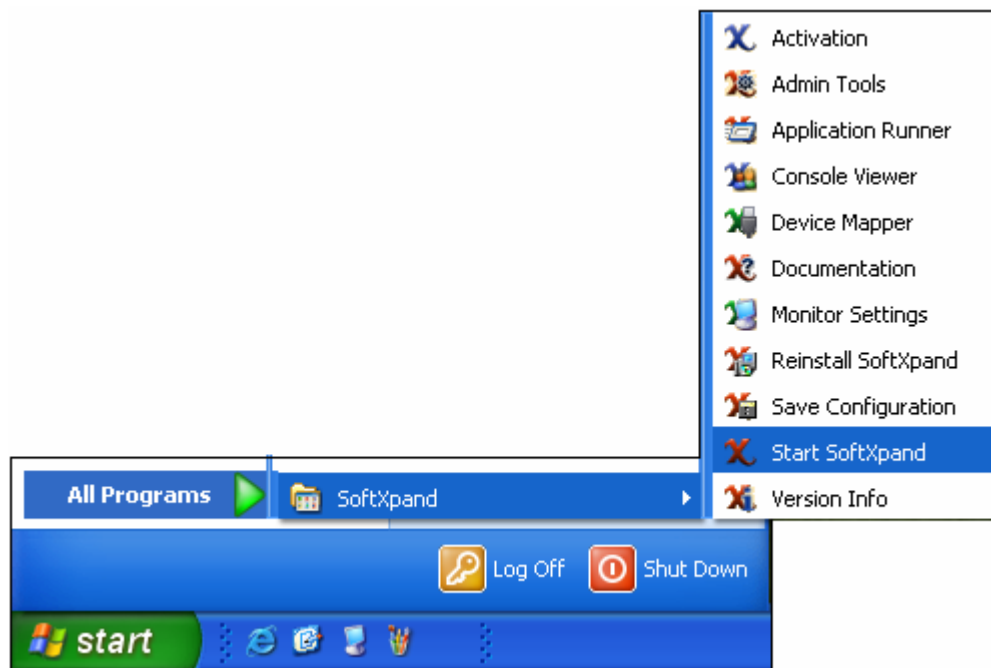


Figure 12: Starting SoftXpand

To start SoftXpand automatically:

1. After a computer restart, SoftXpand will start automatically. This means that all monitors will display a SoftXpand **Logon** dialog box instead of a Windows one. (Please refer to Chapter 6, SoftXpand Admin Tools.)
2. A **Logon** dialog box should appear on all the monitors. If this does not happen, then something has not been configured correctly and all should be rechecked.

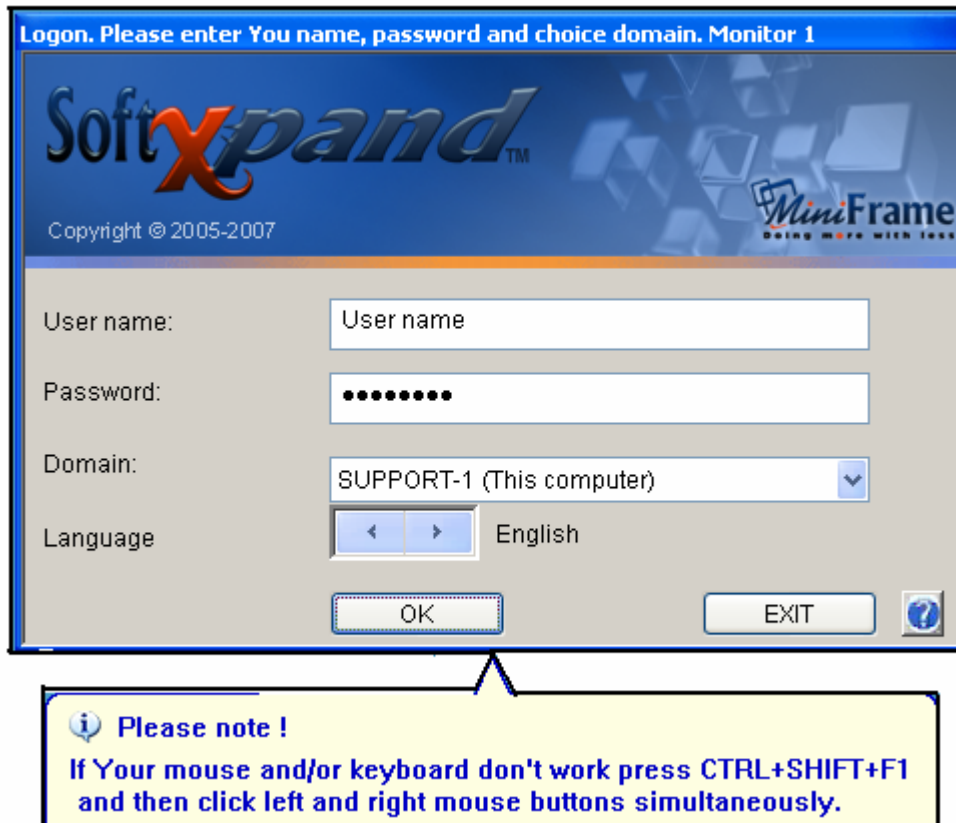


Figure 13: Logon dialog box



5.1 Assigning a keyboard and mouse to a monitor

The keyboards and mice will not react the first time you start *SoftXpand*; they must first be assigned to a workstation. You only have to assign them once.

To assign a keyboard and mouse to the corresponding monitor for each workstation:

1. The number of the monitor is specified at the top of the Logon dialog box as "Monitor #".
2. On the keyboard, hold down the Ctrl + Shift + F# function key.
The number of the function key should be the same as the monitor number.
For example, for monitor 2, press Ctrl + Shift + F2.
3. Release the keys.
4. Immediately click the left and right mouse buttons simultaneously. If you have configured the workstation correctly, you should be able to move the mouse cursor.
5. Assign all the remaining workstations in the same manner.
6. After you are finished assigning all the stations, you can log on.



5.2 Logging on to SoftXpand

All user accounts and their security settings must be preconfigured with Windows. Users must have passwords to log on to SoftXpand. Blank or empty passwords will not function.

To log on to SoftXpand:

1. In the SoftXpand **Logon** dialog box, type a user name and password.
2. Select a **Computer name or Domain** from the drop-down list.
3. Click **OK**.

5.3 Assigning a keyboard and mouse while working


If you replace or add an additional keyboard or mouse to the system while working in SoftXpand, then you need to assign them. You can do this while working, without logging off.

In order to press the correct function key (F#), however, you will need to know the monitor number. This number is displayed at the bottom right corner of the screen as one of the system

tray icons .

5.4 Assigning a sound device to a workstation

Note: The following step can be performed only after you log on to SoftXpand. Make sure the sound device is configured on Windows and works before assigning it with SofXpand.

SoftXpand adds a new icon to the system tray , which is located at the bottom right corner of the screen as one of the system tray icons. In addition to helping you identify the monitor number, this icon is also used to assign audio devices to workstations.

To assign a sound device to a workstation:

1. Right-click the icon. The following dialog box appears:



2. Choose the appropriate sound device from the list of available devices and click **OK**.
3. The sound device is assigned to the workstation.

5.5 Changing display settings while working

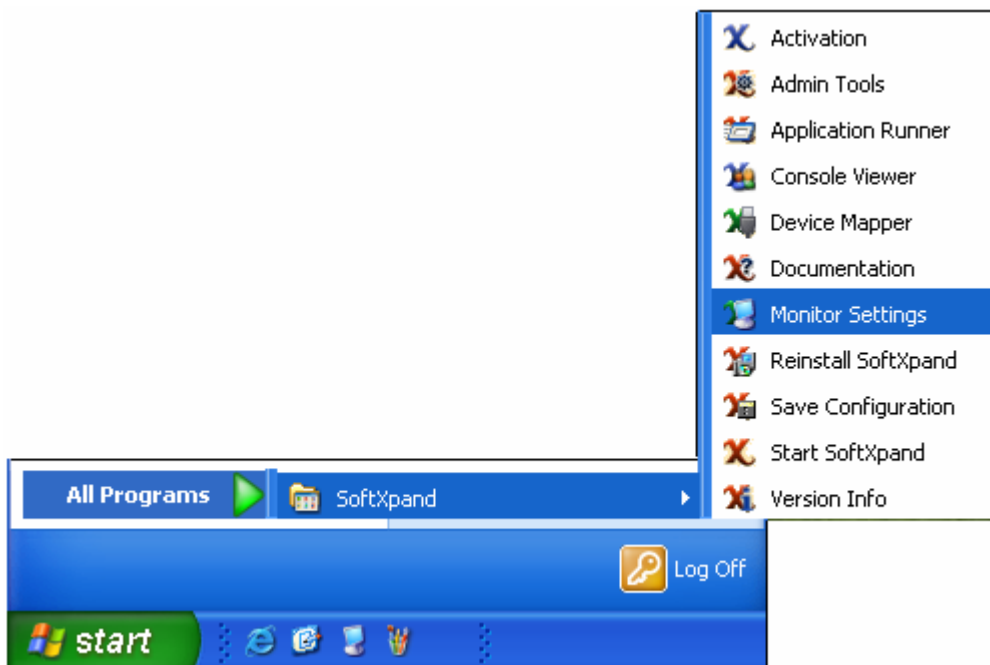


Figure 14: Monitor settings

To change the display settings while working in **SoftXpand**:

Warning: Be sure to save your work and close all applications, because you will have to log off following the process below.

1. In the **Start** menu, point to **All Programs > SoftXpand** and then choose **Monitor Settings**.
2. A dialog box appears, where you can see the current display settings.

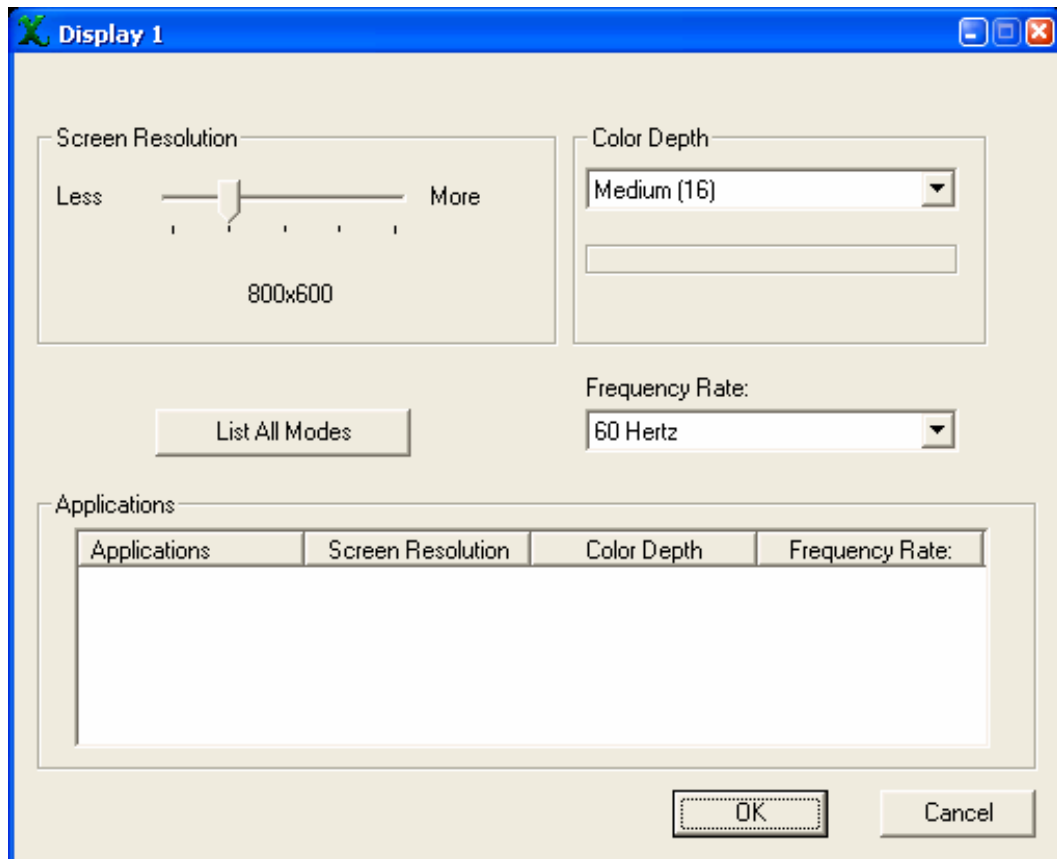
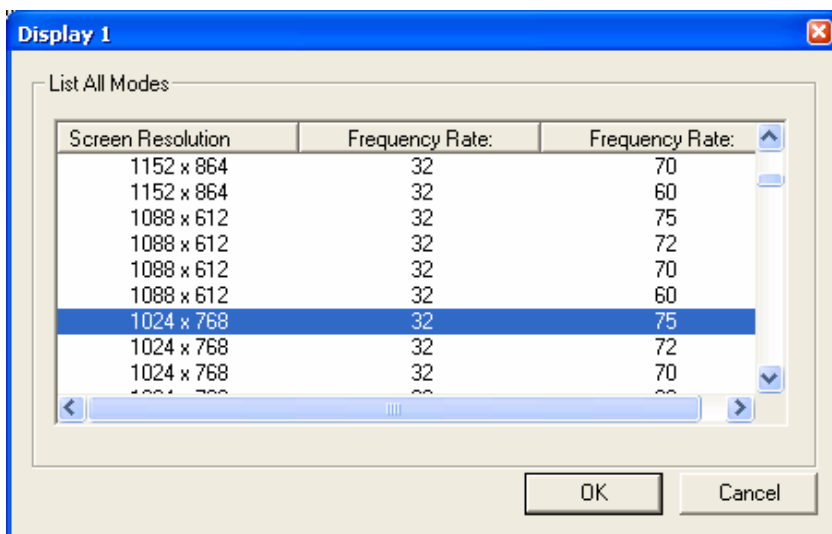


Figure 15: Monitor Settings dialog box

3. There are two convenient ways to configure the display settings: using the **List All Modes** button; or the **Screen Resolution** slider bar, and **Color Quality (Color Depth)** and **Frequency Rate** drop-down menus.
4. To use the first option, click the **List All Modes** button.
5. A dialog box appears with a list of all the possible combinations of **Screen Resolution**, **Color Quality (Color Depth)**, and **Frequency Rate**.

- Choose the setting you want and click **OK**:



- A confirmation dialog box will notify you that your will be automatically logged off for the new display settings to be changed. Save any open documents, close all applications, and click **Yes**.
- You will be automatically logged off. When you log on again you will see the new display settings.
- In the second option, use the **Screen Resolution** slider bar, and the **Color Quality (Color Depth)** and **Frequency Rate** drop-down menus to choose the display settings you want:

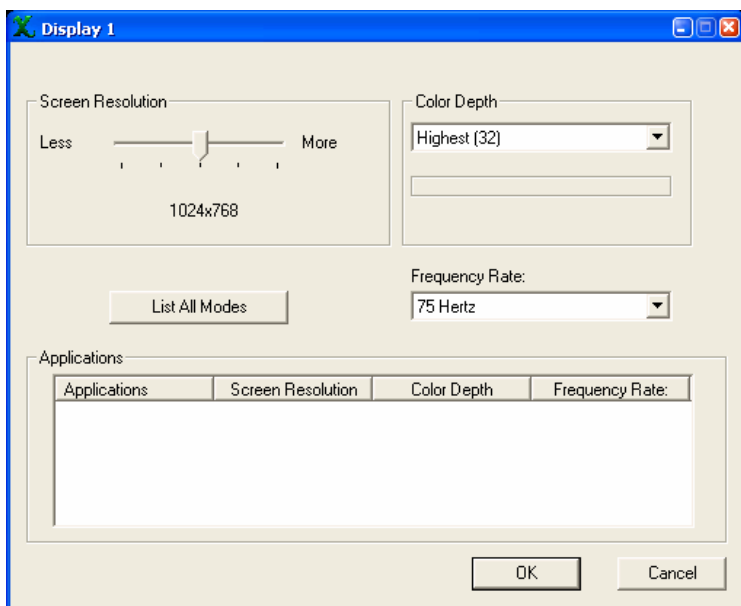


Figure 16: Monitor Settings dialog box

<http://www.miniframe.com>

7. Set the desired combination and click **OK**.
8. A confirmation dialog box will notify you that your will be automatically logged off for the new display settings to be changed. Save any open documents, close all applications, and click **Yes**.
9. You will be automatically logged off. When you log on again you will see the new display settings.

5.6 Exiting to Windows

To exit *SoftXpand* to Windows:

1. Log off *SoftXpand*. The **Logon** dialog box appears.
2. Click **Exit**.
3. *SoftXpand* will exit.

All the workstations except the primary monitor workstation will stop working. The monitor will display the standard Windows **Logon** dialog box.

5.7 Using the Console Viewer for remote control

The computer can be remotely controlled when *SoftXpand* is operating. Unlike the standard Windows XP behavior, the users will not be logged off.

There are two levels of creating a remote control session:

1. Connecting to the computer and opening a session that has no connection to the active *SoftXpand* sessions that are operating on the host.
2. Connecting to the computer and then using the Console Viewer to connect to one of the following types of *SoftXpand* sessions: Session 0, an Active session, or a Virtual Logon session. (Please refer to section 5.7.1, "Console Viewer Toolbar functions.")

The Console Viewer is basically a remote control application with some unique, advanced features. It can be operated only after *SoftXpand* is started, from a remote computer or on all active sessions on the host and workstations.

A non-administrative user who wants to connect to an active session must enter the password of the user who is already logged on to the session.

To open the Console Viewer and move its toolbar:

1. In the **Start** menu, point to **All Programs > SoftXpand** and then choose **Console Viewer**.

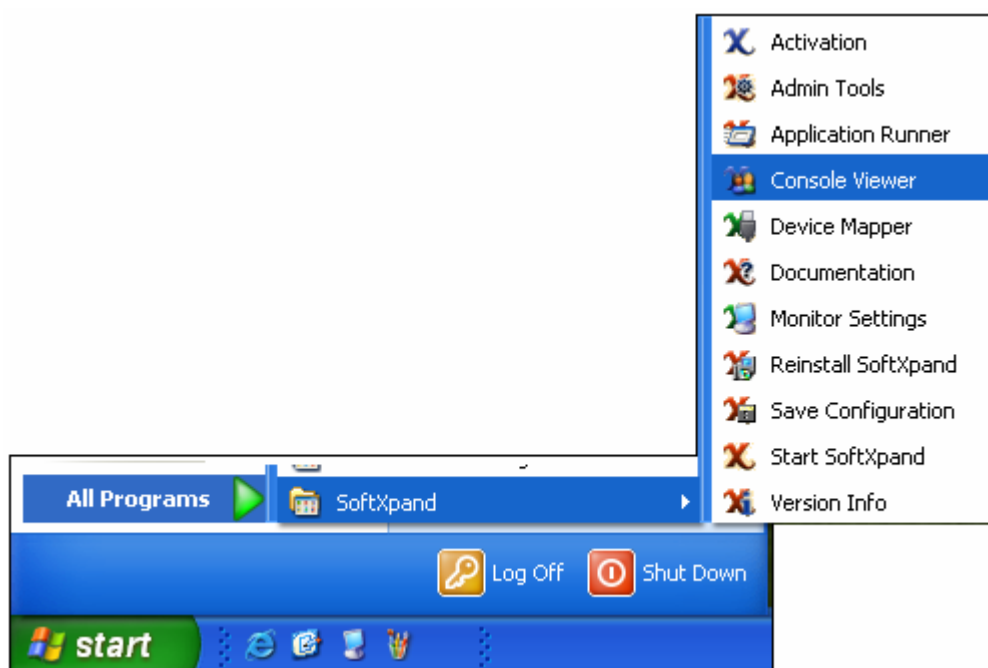


Figure 17: Starting the Console Viewer

2. The *SoftXpand* **Console Viewer (Session Viewer)** will show the **Desktop** of the session that you chose with one additional feature: The **Console Viewer Toolbar** that is located

at the top left corner:

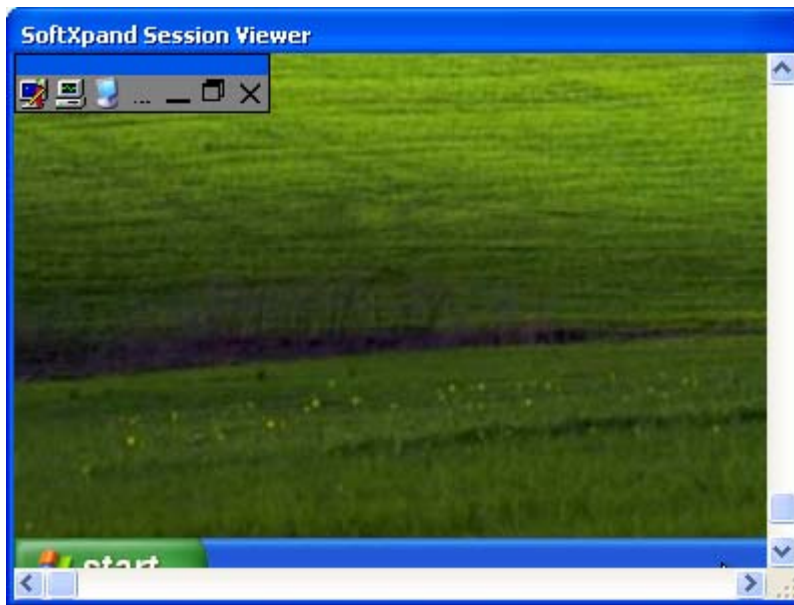
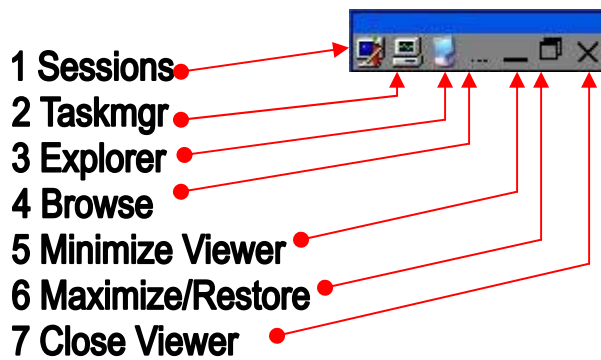


Figure 18: SoftXpand Console Viewer

5.7.1 Console Viewer Toolbar functions

The **Console Viewer Toolbar** has seven icons for seven different functions:



1. **Sessions:** Opens a menu from which you can choose the session you want to appear on the Console Viewer.

With the Console Viewer, you are able to see and control the following:

- ⇒ **Session 0:** The Windows desktop, as though *SoftXpand* were not running, logged onto by an administrative user. This view enables you to perform any Windows task and configuration that cannot be reached through a *SoftXpand* session.
- ⇒ **Virtual Logon:** Any workstation that is not logged onto by a user and has the *SoftXpand* Logon dialog box on the screen.
- ⇒ **Any active session**, identified by the monitor number, session number, and the user who is logged on.

To see a session, click the Sessions icon and then choose it from the list.

If you choose a Virtual Logon session, you will have to insert the required logon information in order to log on.

If you do not choose a session, the system will automatically go to Session 0 after five seconds.

You can switch between sessions at any time without logging off.

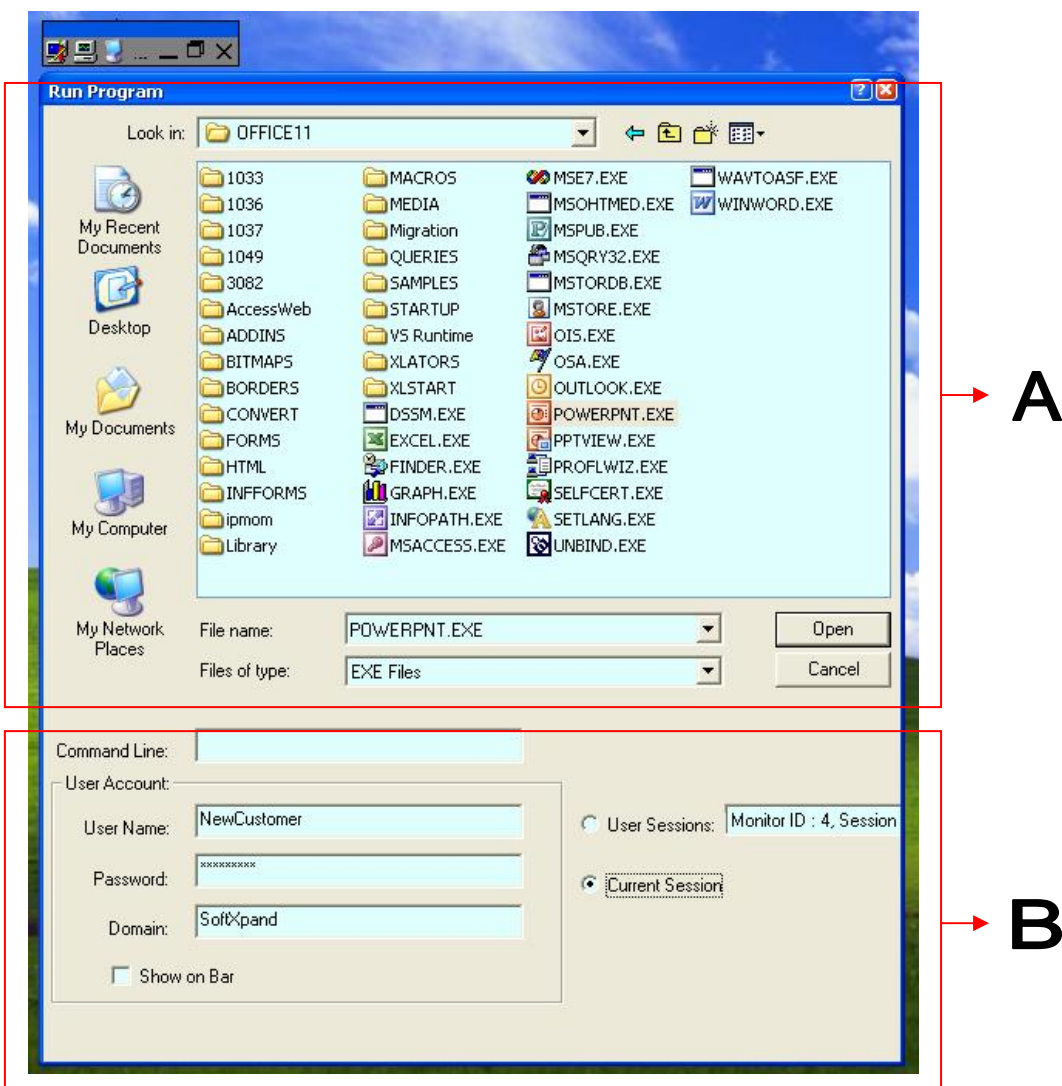
- ⇒ **Two or more desktops at the same time:** You can work on multiple desktops at the same time, running multiple instances of the same application, as if you had more than one computer. Use the Console Viewer to remotely log on to any workstation with any user name, and then operate any application.

Note: The Console Viewer can show only one remote desktop at a time, but you can switch from one session to another without logging off. This means that all workstations can be controlled by one workstation that is logged onto by an administrative user.

2. **Taskmgr:** Opens the Task Manager window that is related to the session you are viewing with the Console Viewer.
3. **Explorer:** Opens a Windows Explorer window in the session you are viewing with the Console Viewer.

4. **Browse:** Enables you to browse and run any applications on any workstation using any user name and password. For example:
- ⇒ You are logged on with an administrative user. Another user with no administrative rights is logged on to another workstation. You want to enable that user to operate an application that requires administrative rights on a one-time basis. With the Browse feature, you can remotely start the application on the other workstation without having to make any security configuration change. As soon as the user completes the task and closes the application, he or she cannot start it again.
 - ⇒ A user needs one-time access to a local or network folder that he or she has no security/share permissions to open. You can open the folder remotely and enable the user to work on its content, using the rights and permissions of the user you used to open the folder. As soon as the user completes the task and closes the folder, he or she cannot enter it again.

When you click the **Browse** icon, the dialog box below appears, with the following functions:



Section A is exactly like the regular Open/Save interface in Windows; Windows users will have no trouble operating it.

Section B is a unique *SoftXpand* feature. Here you can add a Command Line and switches. You can choose the appropriate user and session to run a specific application.

Command Line: Add a command line to the program you chose in Section A.

For example: In Section A, browse to "C:\Program Files\Microsoft Office\OFFICE11\OUTLOOK.EXE". In the Command Line field, type: "/ResetWunderBar" (in order to rebuild the new Outlook 2003 control bar).

User Account: Type in the information for the user account you are assigning to run the application.

User Sessions: You can choose the session on which to run the application. It does not have to be the session you are currently viewing with the Console Viewer or the session you are logged onto.

Current Session: Start the application on the current session you are controlling with the Console Viewer.

5. **Minimize Viewer:** Minimizes the Console Viewer window so you can view your own session.
6. **Maximize/Restore:** Maximizes the Console Viewer window or restores it to its original size.
7. **Close Viewer:** Closes the Console Viewer.

6 SoftXpand Admin Tools

The SoftXpand Admin Tools enable you to change many SoftXpand configurations.

6.1 Accessing the Admin Tools

There are two situations from which you can open the Admin tools:

1. When SoftXpand is not running, log onto Windows and follow the path below.
2. When SoftXpand is running, access the Admin Tools using the Console Viewer on Session 0.

In either case, the path is the same: In the Start menu, point to **All Programs > SoftXpand** and then choose **Admin Tools**:

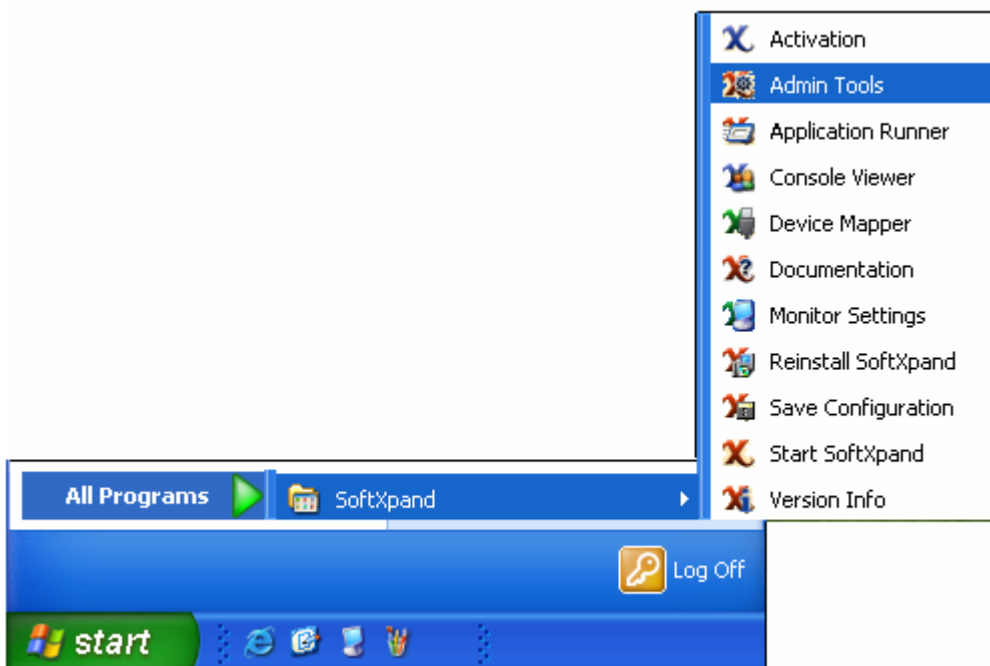


Figure 19: Starting the Admin Tools



6.2 The three Admin Tools tabs

1. Terminal Session Manager tab

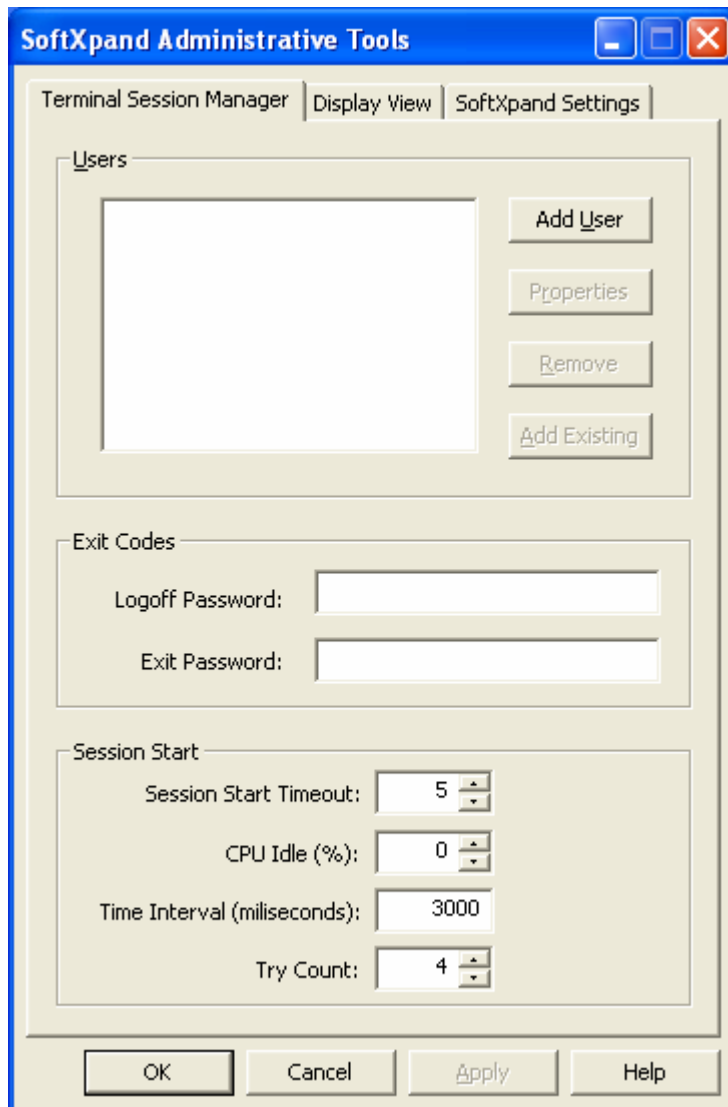


Figure 20: Terminal Session Manager tab



2. **Display View tab**

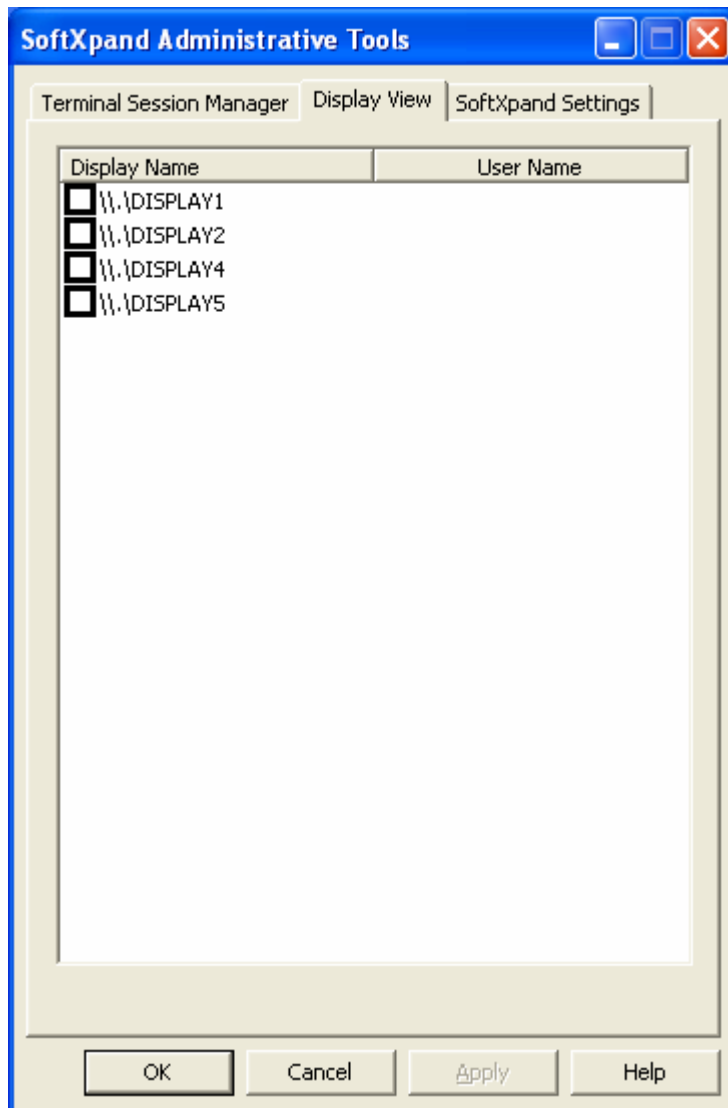


Figure 21: Display View tab

3. **SoftXpand Settings tab**

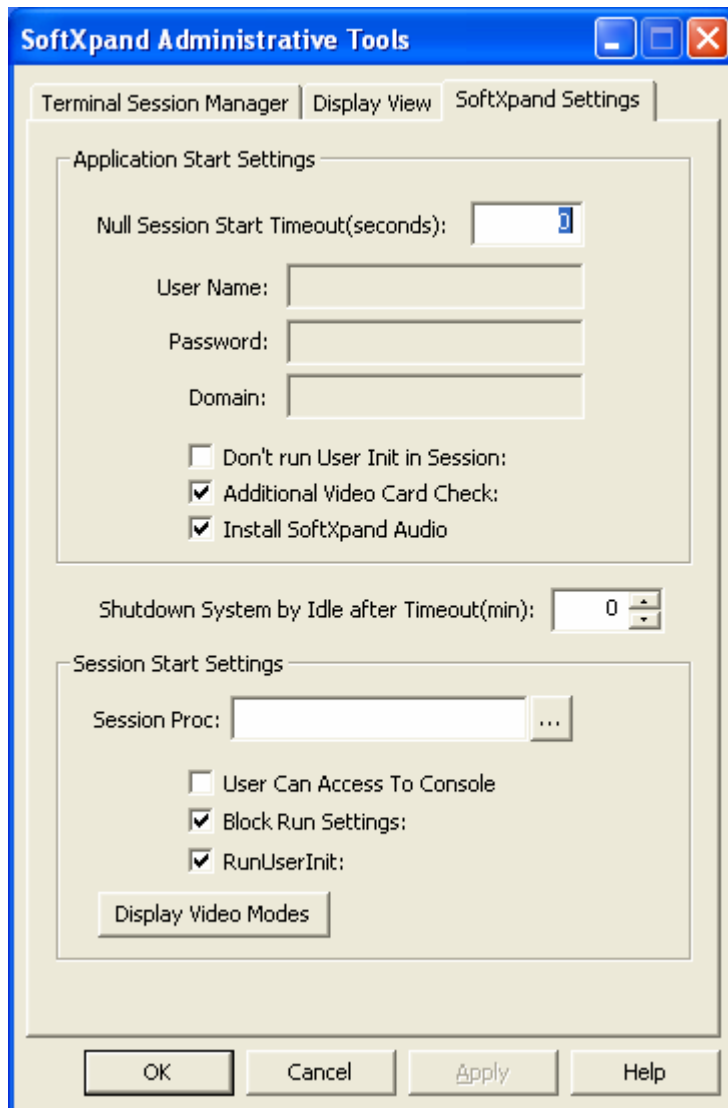


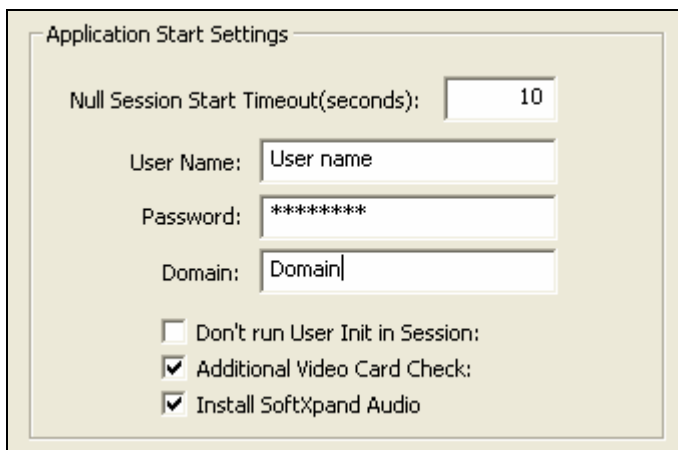
Figure 22: SoftXpand Settings tab

6.3 Using the Admin Tools

6.3.1 Automatic SoftXpand startup

To set the automatic startup:

1. Open the SoftXpand Settings tab.
2. In the **Applications Start Settings** area, set the time (in seconds) for SoftXpand to wait, after the Windows **Logon** screen appears, before starting. Type the number in the Null Session Start Timeout (seconds) field. We recommend 10 seconds.
3. Type in a **User Name**, a **Password**, and computer name / domain in the **Domain** field:



Application Start Settings

Null Session Start Timeout(seconds):

User Name:

Password:

Domain:

Don't run User Init in Session:
 Additional Video Card Check:
 Install SoftXpand Audio

Figure 23: Application Start Settings area

4. Click **OK**.
5. SoftXpand will start automatically, using this user, and will also return to this user on the primary monitor after it exits. This user logs on to Windows and creates Session 0.

Note: When Windows starts and SoftXpand is set for automatic startup, a Windows Logon dialog box appears for the amount of time you had set. Do not type anything into it if you want to let SoftXpand continue with the automatic startup.

6.3.2 Advanced automatic startup options

Session Start features

In the Terminal Session Manager tab, Session Start area, you can configure additional conditions in order to assure a smooth *SoftXpand* startup.

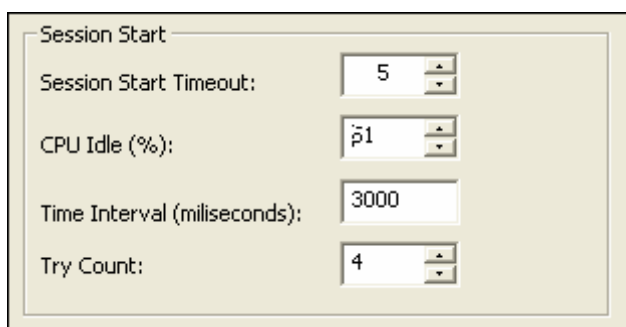
Use the Session Start features below only if you encounter *SoftXpand* startup problems:

Session Start Timeout: Indicate how long *SoftXpand* should try to start before stopping.

CPU Idle (%): Indicate that *SoftXpand* should not start until the System Idle Process reaches an acceptable threshold level.

Time Interval: Indicate how long *SoftXpand* should wait before trying to start again.

Try Count: Indicate how many times *SoftXpand* should try.



The screenshot shows a configuration window titled "Session Start" with the following settings:

Setting	Value
Session Start Timeout:	5
CPU Idle (%):	1
Time Interval (milliseconds):	3000
Try Count:	4

Figure 24: Session Start area

6.3.3 Setting an automatic computer shutdown

For administrative or security reasons, you may want to make sure the computer shuts down automatically. Set the time, and *SoftXpand* will start counting from the time the last user stopped working on the workstation. Shutdown will occur whether the users logged off or not.

To set an automatic shutdown for a defined idle time:

1. Open the *SoftXpand* Settings tab.

2. Enter the desired time in the **Shutdown System by Idle after Timeout (min)** field.
Enter 0 to cancel the automatic shutdown.

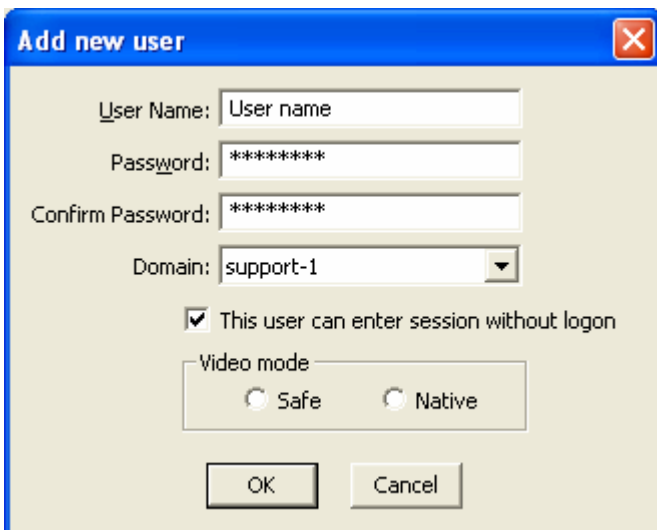
Shutdown System by Idle after Timeout(min):

6.3.4 Mapping a user to a specific workstation with an automatic logon

Note: If you are planning to implement the Auto Logon feature for some or all workstations, make sure all keyboards and mice are manually assigned to their monitors before setting the Auto Logon.

To map a user to a specific workstation:

1. Open the Terminal Session Manager tab.
2. Use the buttons in the **Users** section to manage a list of users you will map to automatic logons on specific monitors.



The image shows a dialog box titled "Add new user" with a close button in the top right corner. It contains the following fields and options:

- User Name:
- Password:
- Confirm Password:
- Domain: (with a dropdown arrow)
- This user can enter session without logon
- Video mode:
 - Safe
 - Native
- Buttons: OK and Cancel

Figure 25: Add New User dialog box

3. Enter the user data in the **Add New User** dialog box. Be sure to mark the **This user can enter session without logon** check box. If you do not choose a display protocol (video mode), the system will set **Native** as the default.
4. Click **OK**.

- Open the **Display View** tab. Click a monitor number in the **Display Name** list. A list with user names (the names you entered in the previous step) appears:



- Click the user to whom you want to assign automatic logon to a specific workstation:



- You can assign each user to as many monitors as you have on your *SoftXpand* setup.
- Click **OK** to confirm the mapping process.

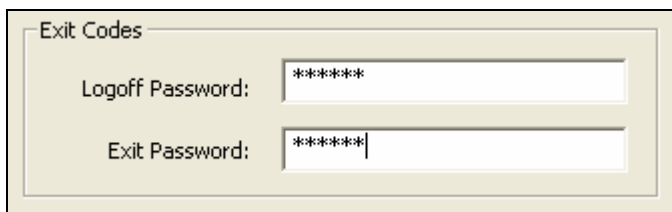
6.3.5 Password protected logoff and SoftXpand exit

To prevent unauthorized logoff or *SoftXpand* exit, you can assign a **Logoff** an/or an **Exit Password**.

To assign the passwords:

Open the Terminal Session Manager tab.

In the **Exit Codes** area, type the password(s) you want to assign in the appropriate fields:



Exit Codes	
Logoff Password:	*****
Exit Password:	*****

In order to log off, users will need to type in the **Logoff Password**.

To exit SoftXpand to Windows, users will need to type in the **Exit Password**.

Warning: Be extremely careful about sharing the Exit Password with other users. Make sure only authorized people have access to it!

6.3.6 Setting special display modes for specific workstations

SoftXpand uses a unique feature, designed by MiniFrame Ltd., that has a special balancing system and enables two types of display modes: Native mode and Safe mode. While SoftXpand assigns the display protocols automatically, you may want to make manual changes in some cases.

Native mode

SoftXpand uses the video card manufacturer's driver. Native mode uses full hardware acceleration. Some applications are designed to demand more physical resources from the CPU than they really need, thus disturbing the normal operation of other applications. The Native mode makes the most of the video card's GPU and overcomes these problems. You can run heavy applications, such as 3D games, on all of the sessions.

Native mode fully supports Direct X and Open GL.

Safe mode

MiniFrame Ltd. developed this protocol in order to solve crucial operational problems. Safe mode does not use hardware acceleration.

It will use only CPU resources and graphic emulation over CPU. Assign this protocol manually if you encounter logon problems, cannot start or operate a particular application, or experience sudden shutdowns. Some dual video cards do not function when you use the Native protocol on both heads (two monitors). Configuring one head with Native mode and the other with Safe mode typically solves the problem.

To set special display modes for specific workstations:

1. In the SoftXpand Settings tab, click the **Display Video Modes** button at the bottom. The **Video Modes** dialog box appears.
2. At the left, you can see all the monitors in your *SoftXpand* setup.
3. Click each monitor and mark the appropriate display protocol (**Video Mode**) check box to the right:

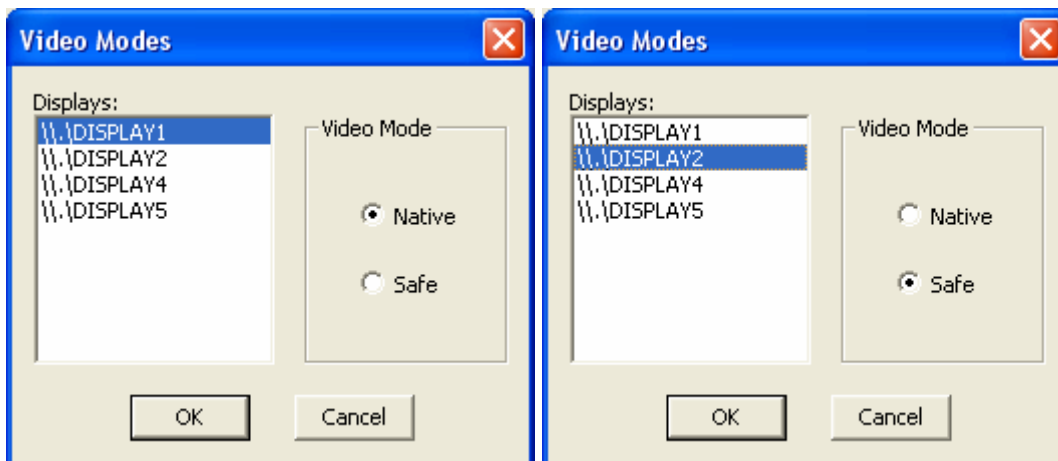


Figure 26: Video Modes dialog box

4. Click **OK**.

6.3.7 Blocking Windows from automatically starting applications at startup

The main reason for blocking automatic startup applications is to save on the use of physical resources. Another reason is that some automatic startup applications may work in contradiction to other applications that are started by the user, possibly causing problems and even shutdowns.

Basic startup settings should be set at the Windows level. The following link may help you if you encounter problems with applications and services that start automatically every time you start your computer:

[System Configuration Utility overview](#)

SoftXpand has some built-in tools to help solve startup problems like these, and to configure an application that will start automatically after SoftXpand starts.

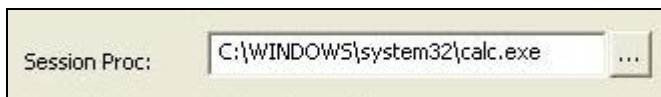
To block Windows from automatically starting applications:

1. Open the SoftXpand Settings tab.
2. In the **Session Start Settings** area, select the **Block Run Settings** check box in order to block all the Windows automatic startup applications. Block Run Settings:
3. Click **OK**.

Applications that are listed in the registry to run when Windows starts will be blocked from running automatically when SoftXpand starts.

Note: Applications that are listed in the Start > All Applications > Startup folder are not affected by this setting. Consider a manual removal of startup applications from this folder.

4. In order to set a startup application that will automatically start after SoftXpand starts, type the path in the **Session Proc** field. The example below shows adding the Calculator to the automatic startup of all sessions:



Additional Video Card Check function: Some video cards have problems balancing their dual view feature. This may cause the system to crash. Should this happen, it is recommended that you use Safe mode.

Note: Safe mode does not use hardware acceleration, so some applications, such as 3D games, may not work.

The Additional Video Card Check function will automatically determine the necessary configuration for your video card to work optimally. If desired, you can manually use any configurations you need.

7 Using the Device Mapper to configure a USB storage device

Mass storage devices can be connected to any of the *SoftXpand* host and workstation USB hubs and connectors. A device can be mapped to a specific workstation, thus allowing access to it only from that workstation.

We recommend that you first connect a device while *SoftXpand* is not running, in order to make sure Windows recognizes and configures it correctly. You may want to use additional software solutions to help Windows allocate the appropriate drive letter to the device.

Note: Please refer to the Microsoft Knowledge Base and to other USB mapping solution vendors.

To connect and map a USB mass storage device to a *SoftXpand* workstation:

1. Log on to the workstation with an administrative user account.
2. In the **Start** menu, point to **All Programs > SoftXpand** and then choose **Device Mapper**:

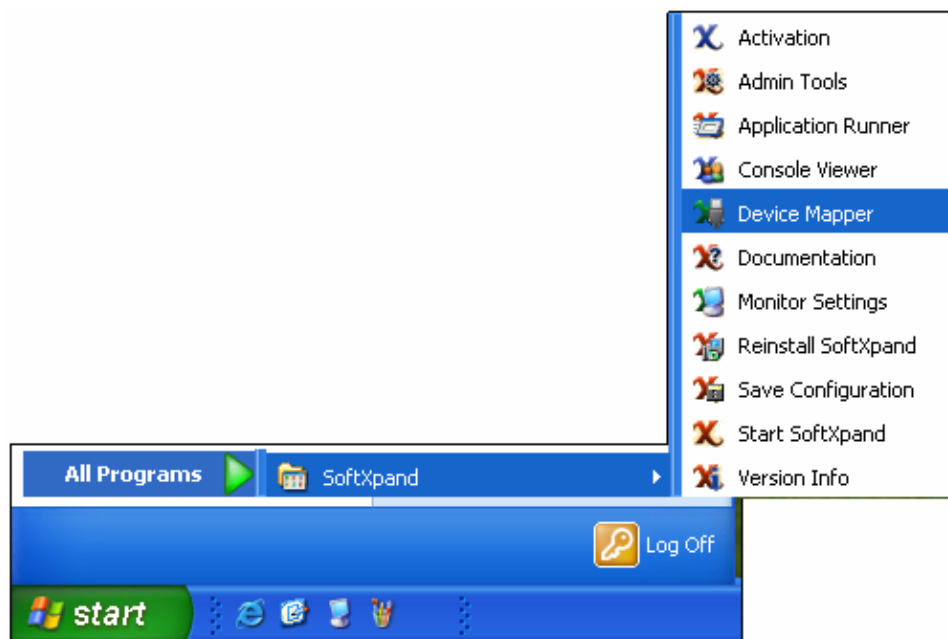
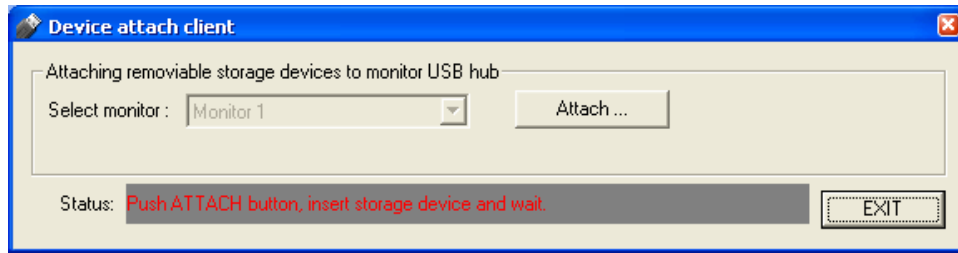


Figure 27: Starting the Device Mapper

3. The **Device attach client** dialog box appears:



4. Click the **Attach** button and then plug in the device.